

# Manchester Column Mounted Mailbox

## MANCHESTER® COLUMN MOUNTED MAILBOX

This decorative cast aluminum mailbox can be easily inset into a column, pilaster or wall. It features a tough powder coat finish in three different colors. Includes oversized masonry box that will hold seven days of mail. Match the Manchester® with an optional newspaper box or address plaque. Faceplate: 11-1/4" x 14-1/4" x 1-1/2". Masonry box: 8-3/4" x 12" x 16".

Products:

- A. Manchester Plain (MAN-1400)
- B. Manchester Fleur-de-lis (MAN-1402)
- C. Manchester Scroll (MAN-1401)
- D. Manchester Pineapple (MAN-1405)
- E. Manchester Oak Tree (MAN-1404)
- F. Manchester Cross (MAN-1403)
- G. Manchester Agave (MAN-1406)



Oversized masonry box included

### Manchester® Finishes



Bronze

Antique Copper

Black

### Manchester® Options



Matching cast aluminum address plaque: 3" gold polished brass numbers. 11" x 6-1/2". (ADD-1410)



Newspaper box: aluminum frame with black masonry box. Frame: 11" x 9-1/4". Insert: 9" x 7" x 15-3/4". (NEW-1415)



Front Door



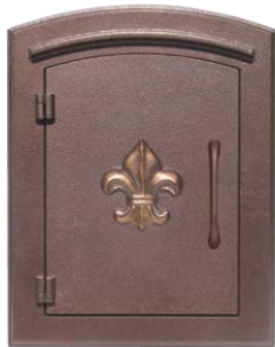
Rear Door

Built-in security insert: Chute drops your mail out of reach of unwanted hands. The mail drops down to a locking rear door for easy collection. The security insert is made of 16 gauge powder coated steel and includes a separate compartment for outgoing mail. The newspaper box is not available with this option. (MAN-LLCOL)

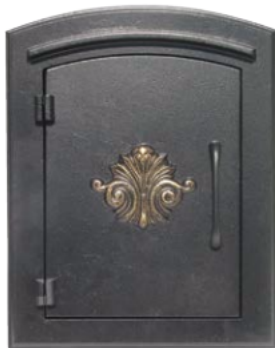
Manchester Locking Conversion Kit: Locking insert converts non-locking Manchester into a locking mailbox. Made of black powder coated steel. Locking door: 5" x 5". Incoming mail slot: 6" W X 1-1/2" H. (MAN-LCKIT)



A



B



C



D



E



F



G

## MANCHESTER® STUCCO COLUMN

Our stucco column comes ready to install over your 4" x 4" wood post. It has a styrofoam core with a ready-to-paint stucco exterior. As an option, we offer three paint choices: Sandstone, Burnt Tuscan, or Slate Gray. See website for full installation instructions. Dimensions: 24" x 24" x 60" (18" x 18" center column). Three different coating options are available: Single Coat, Double Coat and Smooth Cement Coat. Please call for details. (MAN-STUCOL)



Sandstone

Burnt Tuscan

Slate Gray



Stainless Steel Masonry Flag with bracket. Flag dimensions: 1-1/2" x 7". (MF-1450)



Stucco column ready to install over 4" x 4" post.