



Best Price in the  
**UNIVERSE**  
A Mailbox Company

# #6 NEWSPAPER HOLDER HOLDER INSTALLATION

## SUPPLIES NEEDED:

### #6 Newspaper Holder

(part - NPH 6)

### NPH Straps - (2)

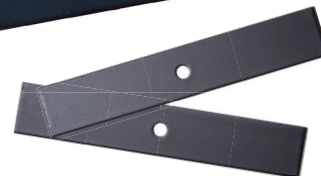
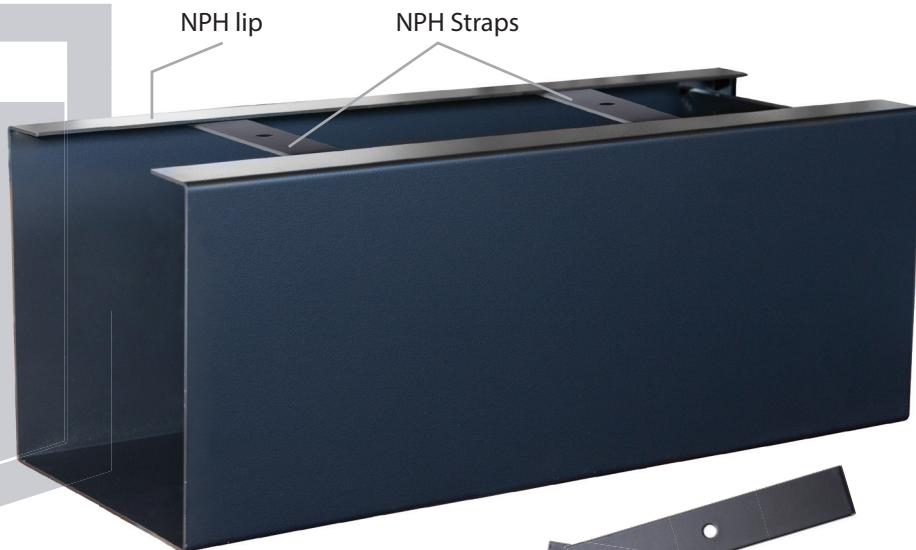
(part - NPH)

### Screwdriver

phillips

### Pliers or

### Small Wrench



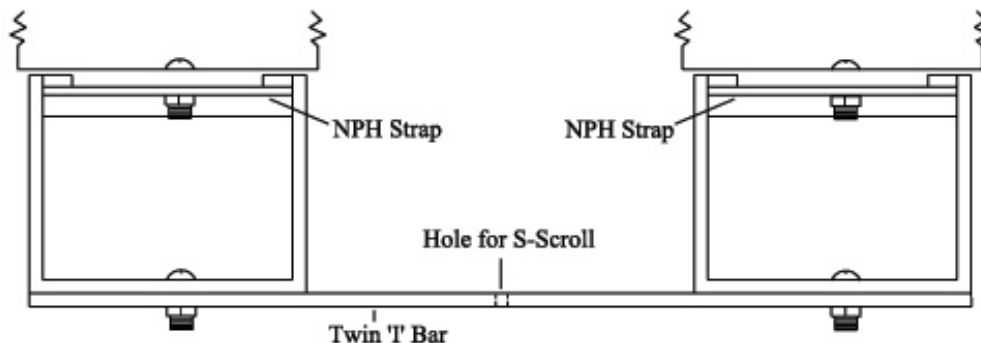
(2 screws/2 nuts are included with the straps)

## SINGLE SYSTEM INSTALLATION:

- 1 Attach number plate to mailbox. Bolt box to post, do not tighten.
- 2 Insert bolts through holes inside of box. Pass through NPH strap and tighten, ensuring strap catches NPH lip. Back of box and NPH should be flush.
- 3 Tighten all bolts, and continue installation.

## TWIN SYSTEM INSTALLATION:

- 1 Attach NPH's to each mailbox.
- 2 Bolt Twin T Bar to each NPH.
- 3 Insert S-Scroll into post and attach to hole in Twin T Bar.
- 4 Continue installation process.



Call our experts today at (866) 685-7873